

# K 100 (W) GAS CL2 20 ppm

## Chlorine gas measuring instrument

- Connection of one or two gas sensors
- Easy and safe operation by plain text menu guidance
- Safety by password function



### applications



Lager-Abluftüberwachung



Ambient Air Monitoring



TLV Monitoring



Environmental Monitoring

### description

The K 100 (W) GAS is a sophisticated instrument for continuous monitoring of gases in ambient air. The connection of one or two electrochemical sensors of the GE-700 series is possible.

### particular characteristics

- Measuring ranges in the ppm-range depending on the used gas sensor
- Automatic sensor test, adjustable test cycle
- 3 potential-free contacts for limit value 1, limit value 2 and general alarm
- Zero current safe - the effective direction of the alarm relay is invertible
- Background illuminated two-line LC-Display
- Display of relay and error messages
- Scaleable, galvanically isolated 0/4 ..20 mA output



# K 100 (W) GAS CL2 20 ppm

## Chlorine gas measuring instrument

### technical data

#### measuring parameter

Chlorine Gas 0.00 .. 10.00 ppm  
0.00 .. 20.00 ppm

#### input characteristics

accuracy Depending on the sensor

#### output characteristics

output signal 0/4 .. 20 mA (measured value sensor 1 or sensor 2)  
load max. 500 Ohm  
registration range Free adjustable within the measuring range  
serial interface RS 485 (optional)  
Baud rate 9600  
data format 8 bit

#### power supply

line voltage 24/ 117/ 230 VAC, +6/-10%, 40 .. 60 Hz  
power consumption 10 VA

#### ambient conditions

ambient temperature operation 0 .. +50 °C , storage -20 .. +65 °C  
relative humidity max. 90% rH at 40°C (non-condensing)

#### protection class

panel mounted housing IP 54 (front), IP 30 (housing)  
wall mounted housing IP 65

#### controller

digital input Stop via external contact

#### certificates and approvals

CE-symbol Declaration of conformity: The product meets the requirements of the harmonized European standards. It thus complies with the legal requirements of the EC directives.

#### mechanical construction - panel mounted housing

material Noryl  
dimensions 90x90x116  
installation dimensions 92x92x140  
weight 0.75 kg  
connection Push-screw terminals

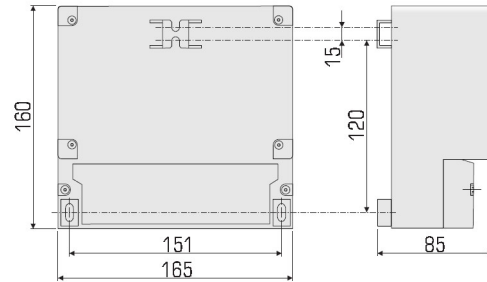
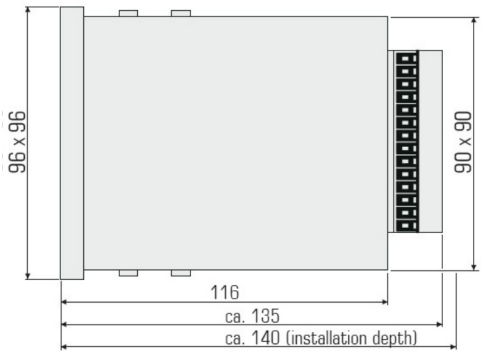
#### mechanical construction - wall mounted housing

material ABS  
dimensions 165x160x85  
weight 0.95 kg  
connection Spring-loaded terminals



# K 100 (W) GAS CL2 20 ppm

Chlorine gas measuring instrument



## order information

<u>name</u>	<u>description</u>	<u>article number</u>
K 100 W GAS CL2 20 ppm	chlorine gas 20 ppm, wall mounted housing, 230 VAC	105506K

## accessories

### assemblies

GSH	Gas sensor holder for one sensor of the GE 700 series including 10 m cable.
-----	---

### sensors

GE 710 CL2	Sensor for measuring Chlorine gas
------------	-----------------------------------

### accessories

RS 485 module K 100 W
-----------------------

