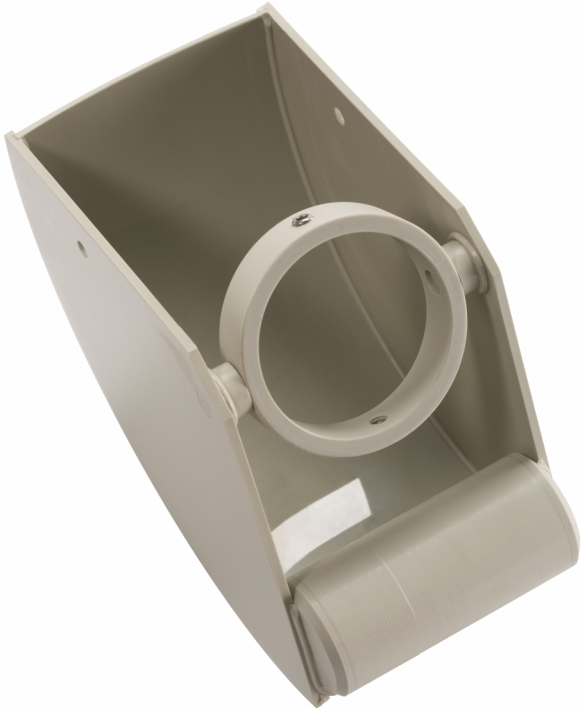


Moisture cap

- **Avoid drying of the sensors**



description

Moisture cap for GE 23/3 PP

For a longer period pH- and ORP sensor shouldn't dry, the moisture cap avoid this.

technical data

mechanical construction - panel mounted housing

material PP

order information

<u>name</u>	<u>description</u>	<u>article number</u>
NSH	moisture cap for immersion assembly GE 23/3	35330103K

