

# P30U TRANSDUCER OF TEMPERATURE AND STANDARD SIGNALS

## FEATURES:

- MOD BUS Slave
- MOD BUS Master
- MOD BUS Monitor
- LPConfig Program
- SD/SDHC
- Firmware upgrade
- 21 points charact.
- RTC
- Password protection

## INPUT:

- °C
- Ω
- DC

## OUTPUT:

- Graph icon
- Waveform icon
- U
- RS 485

## GALVANIC ISOLATION:

- Isolation icon 1
- Isolation icon 2
- Supply icon
- RS 485 icon

Export department:  
 English: +48 68 32 95 302 / 321 / 276 / 386 / 233  
 German: +48 68 32 95 305  
 Russian: +48 68 32 95 321  
 Fax: +48 68 32 54 091  
 e-mail: export@lumel.com.pl

LUMEL S.A.  
 ul. Sulechowska 1  
 65-022 Zielona Góra  
 POLAND

[WWW.LUMEL.COM.PL](http://WWW.LUMEL.COM.PL)

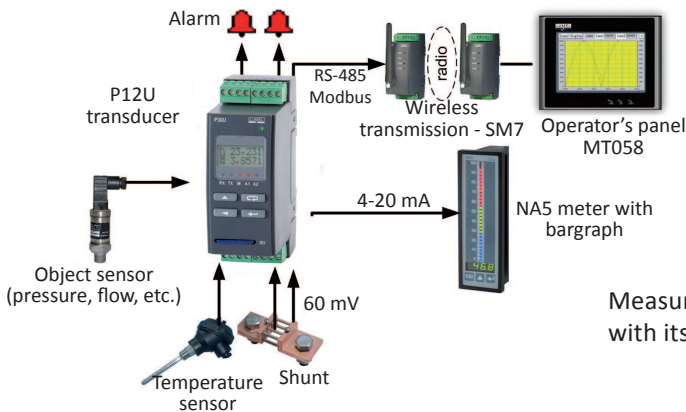


NEW



- Universal measuring input.
- Mathematical functions.
- Individual characteristic (up to 21 points).
- 1 or 2 (option) alarm output.
- Built-in power supply of object transducers 24V d.c. (option).
- RS485 interface Modbus RTU Slave, RTU Master or Monitor.
- Possibility to define the unit by the user.
- Data recording in internal memory, up to 4MB or 4GB in SD/SDHC card.
- Transducer configuration using buttons or RS485 interface and LPConfig software.
- Firmware upgradeable by the user.

## EXAMPLE OF APPLICATION:



Measurement and signal conversion with its visualization and retransmission.

## INPUT

Input type	Nominal measuring range Z	Coefficient k*	Input type	Range	Minimal sub-range with class preservation
Voltage 10 V	-10...10 V	5	Thermocouple J type	0...400 °C	1
Voltage 24 V	-24...24 V	10		-200...1200 °C	2
Current	-20...20 mA	10	Thermocouple K type	0...400 °C	1
Resistance 400	0...400 Ω	4		-200...1370 °C	2
Resistance 2000	0...2000 Ω	2	Thermocouple S type	0...1760 °C	2
Resistance 5500	0...5500 Ω	2	Thermocouple N type	-20...420 °C	1
Pt100	-200...850 °C	5		-200...1300 °C	1
Pt250	-200...600 °C	4	Thermocouple E type	-40...260 °C	1
	-200...850 °C	3		-200...1000 °C	2
Pt500	-200...180 °C	3	Thermocouple R type	0...1760 °C	2
	-200...850 °C	3	Thermocouple T type	-200...400 °C	1
Pt1000	-200...250 °C	4	Thermocouple B type	400...1800 °C	1
	-200...850 °C	2			
Ni100	-60...180 °C	1	RS485 Master		
Ni1000	-60...150 °C	2			
Ni100-LG	-60...180 °C	1			
Ni1000-LG	-60...180 °C	2	RS485 monitor		
Cu100	-50...180 °C	1			
Voltage mV	-5...20 mV	1			
	-75...75 mV	4			
	-200...200 mV	4			

Accuracy class = 0.1 with the exception of S, R and B thermocouples, where accuracy class = 0.5

k\* coefficient of narrowing the measuring range with keeping the accuracy class.

NOTE: Minimal sub-range with keeping the accuracy class is z/k (it is freely programmable).

Example: 10 Z = -10...10V;

k = 10

Z/k = 2 V, so the minimal sub-range can be e.g. -1...1 V; 0...2 V; 5...7 V

## OUTPUT

Output type	Properties	Remarks
Analog	Current: 0/4...20 mA, load resistance ≤ 500 Ω Voltage: 0...10 V, load resistance ≥ 500 Ω	accuracy class: 0,1
Relay	1 or 2 relays; voltageless contacts – NO – maximum load 5A 30V d.c., 250V a.c.	
Supplying output	24 V d.c. / 30 mA (option)	

## DIGITAL INTERFACE

Interface type	Protocol	Baud rate
RS-485	Modbus RTU: 8N2, 8E1, 8O1, 8N1 Address 1...247	4.8, 9.6, 19.2, 38.4, 57.6, 115.2, 230.4, 256 kbit/s

## EXTERNAL FEATURES

Overall dimensions	45 x 120 x 100 mm	
Weight	< 0.25 kg	
Protection grade	for housing: IP40	for terminals: IP10
Readout field	LCD 2 x 8	

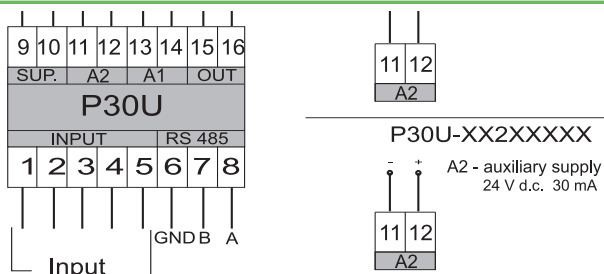
## RATED OPERATION CONDITIONS

Supply voltage	<ul style="list-style-type: none"> <li>• 85..253 V d.c. / a.c. (40..400 Hz)</li> <li>• 20..40 V a.c. (40..400 Hz) or 20...60 V d.c.</li> </ul>	Power consumption < 5 VA
Temperature	ambient: -25...23...+55°C	storage: -30...+70°C
Relative humidity	25...95 %	inadmissible condensation
Working position	any	

## SAFETY AND COMPATIBILITY REQUIREMENTS

Electromagnetic compatibility	noise immunity	acc. EN 61000-6-2
	noise emissions	acc. EN 61000-6-4
Isolation between circuits	basic	acc. EN 61010-1
Pollution level	2	
Installation category	III	acc. EN 61010-1
Maximal phase-to-earth voltage	<ul style="list-style-type: none"> <li>• for supply circuits 300 V</li> <li>• for other circuits 50 V</li> </ul>	
Altitude above sea level	< 2000 m	

## CONNECTION DIAGRAM



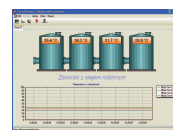
## SEE ALSO:



Temperature sensors

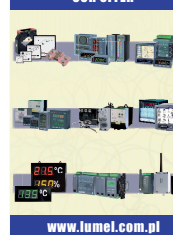


N30U meter



LUMEL - PROCESS software

## OUR OFFER



For more information about LUMEL's products please visit our website:  
[www.lumel.com.pl](http://www.lumel.com.pl)

**Export department:**  
**English:** +48 68 32 95 302 / 321 / 276 / 386 / 233  
**German:** +48 68 32 95 305  
**Russian:** +48 68 32 95 321  
**Fax:** +48 68 32 54 091  
**e-mail:** [export@lumel.com.pl](mailto:export@lumel.com.pl)

LUMEL S.A.  
 ul. Sulechowska 1  
 65-022 Zielona Góra  
 POLAND  
[WWW.LUMEL.COM.PL](http://WWW.LUMEL.COM.PL)

## ORDERING

P30U -	X	XX	X	X	XX	X	X
<b>Analog output:</b>							
current (range 0...4...20 mA)	1						
voltage (0...10 V)	2						
<b>SD/SDHC card:</b>							
without slot for SC card		0					
with slot for SD card		1					
<b>Addition output:</b>							
NO relay, 5 A 30 V d.c., 250 V a.c.			1				
supply 24 V d.c. / 30 mA			2				
<b>Supply:</b>							
85...253 V a.c./d.c.				1			
20...40 V a.c., 20...50 d.c.					2		
<b>Version:</b>							
standard						00	
custom-made*						XX	
<b>Language version:</b>							
Polish							P
English							E
<b>Acceptance tests:</b>							
without extra requirements							0
with an extra quality inspection certificate							1
according to customer's request*							X

### Order example:

Code P30U-111100P0 means transducer execution with current output, SD slot for SD card, with 2 alarm relays, 85..253 V a.c. / d.c. (40..400 Hz) power supply, standard version, Polish language, without extra requirements.

\* after agreeing with the manufacturer.