



POLAR-Series DC | Climativ-proofed -60 °C

Proximity switches

**M12 / M18 / M30
Stainless steel sleeve**

DC 10...30 V

**IP 68 Water-proofed
IP 69 Resistant to
high pressure cleaning**



Design	DC PNP • M12x1		DC PNP • M18x1		DC PNP • M30x1.5	
Dimensions						
Installation flush (f) non flush (nf)						
Operating distance sn [mm]	2 f	4 nf	5 f	7 nf	10 f	15 nf
Switching output PNP						
ID-No.	P31145	P31146	P31147	P31148	P31219	P31220
Type	IGMP 02 GSP	IGMP 04 GSP	IGMP 05 GSP	IGMP 08 GSP	IGMP 010 GSP	IGMP 015 GSP
Supply voltage [V]	10...30 DC					
Switching current [mA]	200					
Short circuit proof	•					
Overcurrent release [mA]	230					
Reverse protection	•					
Voltage drop max. [V]	2					
Load current [mA]	-					
Current consumption [mA]	4					
Switching frequency [Hz]	1000					
Ambient temperature [°C]	-55...+60					
Temperature min. [°C]	-60					
Temperature gradient [K/min]	5					
EMC-class	A					
Protection [EN 60529]	IP 68 + IP 69					
LED display	•					
Housing material	PTFE / AISI 316 Ti					
Connection	2 m FEP-cable 3x0.34 mm ²					
Switching current						





POLAR-Series AC | Climativ-proofed -60 °C

Proximity switches

M18
Stainless steel sleeve

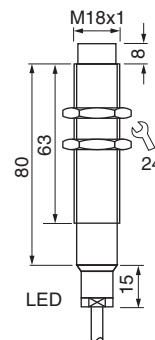
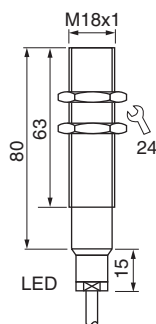
AC 20...250 V

IP 68 Water-proofed
IP 69 Resistant to high pressure cleaning



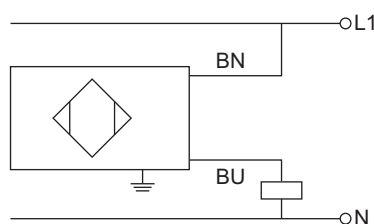
Design **AC • M18x1**

Dimensions



Installation
flush (f)
non flush (nf)

Operating distance sn [mm]	5 f	7 nf
Switching output		
ID-No.	P31149	P31150
Type	IGMP 005 WS	IGMP 008 WS
Supply voltage [V]	20...250 AC	
Switching current [mA]	300	
Short circuit proof	-	
Overcurrent release [mA]	-	
Reverse protection	-	
Voltage drop max. [V]	4.5	
Load current [mA]	5	
Current consumption [mA]	2.5	
Switching frequency [Hz]	25	
Ambient temperature [°C]	-55...+60	
Temperature min. [°C]	-60	
Temperature gradient [K/min]	5	
EMC-class	A	
Protection [EN 60529]	IP 68 + IP 69	
LED display	•	
Housing material	PTFE / AISI 316 Ti	
Connection	2 m FEP-cable 3x0.75 mm ²	





POLAR-Series | Climativ-proofed –80 °C

Proximity switches

M30
Stainless steel sleeve

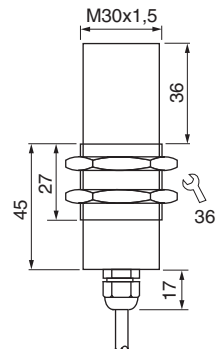
IP 68 Water-proofed

–80 °C permanent temperature



Design **M30x1.5**

Dimensions



Installation
flush (f)
non flush (nf)

Operating distance sn [mm]	3 nf
----------------------------	------

ID-No.	P31337
Type	IGMP 030 S-80
Supply voltage [V]	-
Switching current [mA]	-
Hysteresis max. [%]	10
Short circuit proof	-
Reverse protection	-
Current consumption [mA]	-
Switching frequency [Hz]	-
Ambient temperature [°C]	-80...+50
EMC-class	A
Protection [EN 60529]	IP 68
LED display	-
Housing material	PTFE / AISI 316 Ti
Connection	2 m FEP-cable 3x0.75 mm ² , shielded

Sensor for the connection
to amplifier IKM 120...,
see page 3.34

